

Relations & Graphing

GF4

graphs of relationships can:

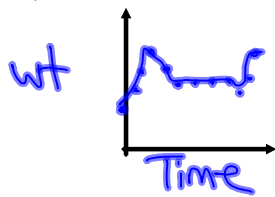
increase (slope upward) = positive slope

decrease (slope downward) = negative slope

stay constant (horizontal) = zero slope

continuous graphs - connected with lines or curves

(will include all the numbers between data points)



Person's wt
over 1 year

- domain is given w/ inequality

discrete graphs - distinct points

(only include the specific data points)



glasses of H₂O
drank in one week

- Or domain is not given (all real #s)

- domain is given as a list of distinct #s

★ Ask yourself:

Can the values include
all the values between data
pts?

yes → continuous

no → discrete